

# Intermodal Terminal McCalla



birmingham**business**alliance

THE CHAMBER FOR REGIONAL PROSPERITY

**By: Patrick Murphy**  
**Senior Vice President, Economic Development**  
**Monday November 9, 2009**

# Metropolitan Birmingham

## Transportation and Material Moving Occupations

- **Employing more than 40,000, Transportation and Material Moving is a major component of metropolitan Birmingham's economy (8% of total employment)**
- **The Mean Annual Salary for Transportation and Material Moving occupations are comparable to Production (Manufacturing Mean Annual Salaries), \$29,080 compared to \$31,790.**
- **Metropolitan Birmingham's Mean Annual Salary (all occupations) is \$38,980**

# Metropolitan Birmingham

## Transportation and Material Moving Occupations

Metropolitan Birmingham Transportation and Material Moving Occupations	Metropolitan Birmingham Total Employment	Metro Birmingham Mean Annual Salary
Transportation and material moving occupations	40,600	\$ 29,080
Production occupations (Manufacturing)	35,110	\$31,790
First-line supervisors/managers of helpers, laborers, and material movers, hand	980	\$ 43,630
First-line supervisors/managers of transportation and material-moving machine and vehicle operators	1,200	\$ 48,700
Driver/sales workers	1,540	\$ 23,370
Truck drivers, heavy and tractor-trailer	8,590	\$ 40,590
Truck drivers, light or delivery services	3,360	\$ 29,000
Rail yard engineers, dinkey operators, and hostlers	40	\$ 48,540
Transportation inspectors	n/a	\$ 66,850
Transportation workers, all other	310	\$ 18,980
Conveyor operators and tenders	310	\$ 27,210
Crane and tower operators	510	\$ 39,920
Industrial truck and tractor operators	2,990	\$ 28,870
Cleaners of vehicles and equipment	1,210	\$ 21,280
Laborers and freight, stock, and material movers, hand	11,000	\$ 21,830
Machine feeders and offbearers	450	\$ 26,880
Packers and packagers, hand	1,650	\$ 18,550
Refuse and recyclable material collectors	490	\$ 24,610
Tank car, truck, and ship loaders	270	\$ 26,030
Material moving workers, all other	60	\$ 37,360

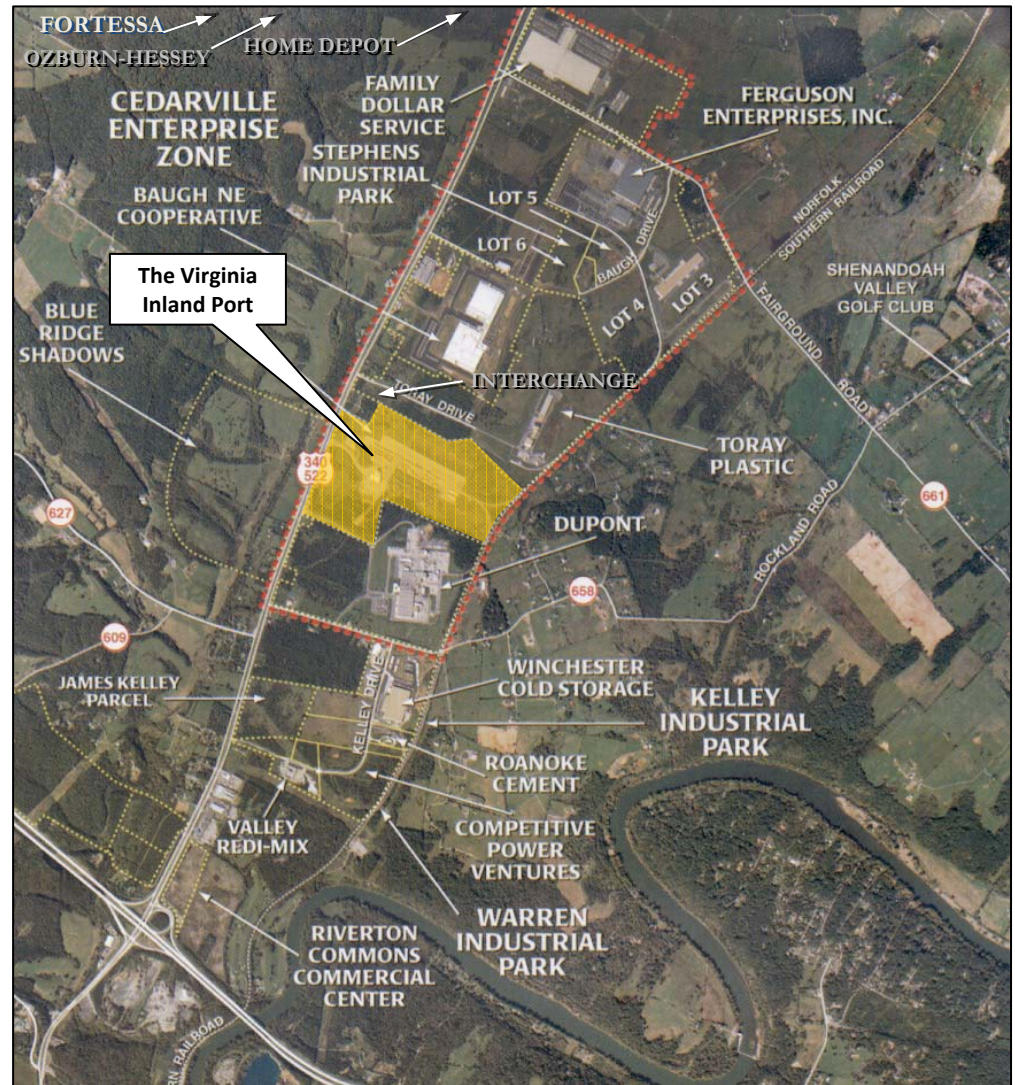
*The chart above compares Metropolitan Birmingham's Transportation and Material Moving Occupation wages with the overall mean annual salary.*

**Note: Metro Birmingham mean Annual salary: \$38,980**

# Virginia Inland Port (VIP)

## Front Royal, Virginia

- Economic Engine for the Commonwealth of VA
- Opened March 1989
- 27 Major Companies have Located Near VIP
  - Investment over \$599 Million
  - Over 6 Million SF of Buildings
  - Employment over 7,000



# Major Companies Locating Near Virginia Inland Port (VIP) Front Royal, Virginia



*Walden Farms* Since 1972

No Calories, Fat, Carbs, Gluten or Sugars of any kind!

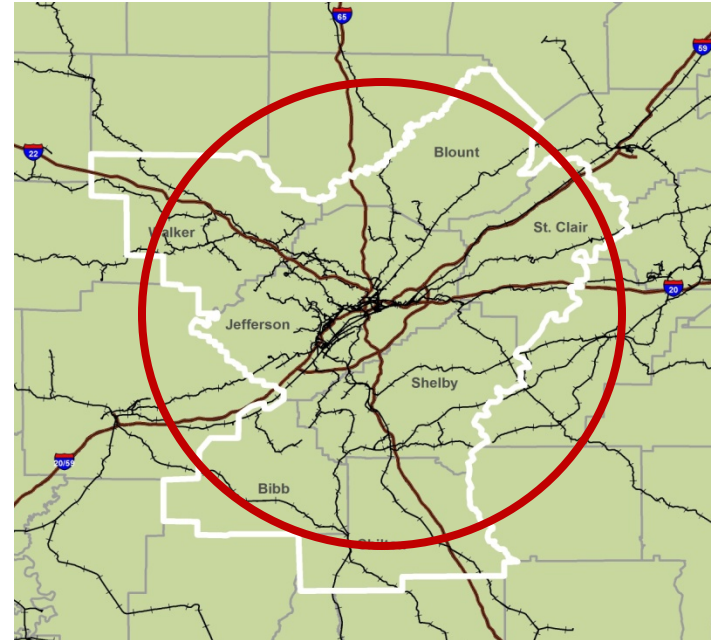


# Metropolitan Birmingham

## Transportation Infrastructure



**Metropolitan Birmingham  
Comprehensive Interstate Network**



**Metropolitan Birmingham  
Comprehensive Rail Network**

# Metropolitan Birmingham

## Development Opportunities

**Distribution and Warehousing**

**Manufacturing**

- Rail and Non-Rail

**Existing Industry**



# McCalla

## Interstate 459 and Eastern Valley Road (Exit1)



Academy Drive commercial cluster

600-acre village concept development

Colonial Promenade Tannehill

*Colonial Promenade Tannehill anchors the rapidly-developing commercial node of McCalla. The 450,000 square-foot center opened in July 2008 and features Target, Publix and Premier Cinemas.*